



# CHICAGO CORINTHIAN YACHT CLUB



## SAILING INSTRUCTIONS - AMENDMENT #1

### -- Spring Opener Long Distance --

#### 1. GENERAL

1.1. This is the Fifth Annual Spring Opener Long Distance Race to be run simultaneously with the Spring Opener buoy race.

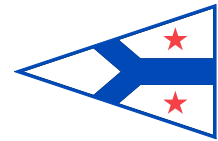
#### 2. COURSE

2.1. A course will be chosen by the Race Committee from the following list. The chosen course's letter designation shall be displayed on a white mark up board by the Race Committee no later than 10 minutes prior to the first warning signal. The Race Committee may also fly a pennant with the course's letter designation. The Race Committee will make courtesy broadcasts announcing the choice of course on channel 78 VHF. Failure to receive these communications shall not be grounds for redress. This changes RRS 62.1.. There are 10 possible courses. The denotation "P" or "S" after the name of the mark indicates the side on which the mark shall be passed. Otherwise, marks are to be left on the side noted after the course length.

E:	SA1 > E2 > SE2 > R4 > 4 Mile Crib > FIN	(22.88 NM, STARBOARD)
N:	SA1 > V > T > SE2 > 4 Mile Crib > FIN	(19.97 NM, STARBOARD)
NE:	SA1 > T > SE2 > 4 Mile Crib > FIN	(17.85 NM, STARBOARD)
NE-:	SA1 > T > SE2 > Dever Crib > FIN	(13.74 NM, STARBOARD)
NW:	SA1 > NW > V > T > SE2 > 4 Mile Crib > FIN	(20.24 NM, STARBOARD)
S:	SA1 > S > 4 Mile Crib > T > V > FIN	(19.60 NM, PORT)
S-:	SA1 > S > SE2 > V > FIN	(13.76 NM, PORT)
SE:	SA1 > SE2 "S" > 4 Mile Crib "S" > T "P" > V "P" > FIN	(21.05 NM)
SW:	SA1 > SW > 4 Mile Crib > T > V > FIN	(20.07 NM, PORT)
W:	SA1 > W > V > T > SE2 > 4 Mile Crib > FIN	(20.80 NM, STARBOARD)



# CHICAGO CORINTHIAN YACHT CLUB



## SAILING INSTRUCTIONS - AMENDMENT #1

### -- Spring Opener Long Distance --

#### 2.2. CCYC MAINTAINED MARKS

NOTE: LAT / LONG in DEGREES & DECIMAL MINUTES					
CCYC MARKS	Note	Color	Approximate Latitude/Longitude		Description
CP (SA-A/SA1)		Orange	N41.57.740	W087.36.400	CCYC center pin
N	360 T, .75NM > CP	Orange/White	N41.58.490	W087.36.400	CCYC north mark
NE	045 T, .75NM > CP	White	N41.58.270	W087.35.690	CCYC northeast mark
E	090 T, .75NM > CP	White	N41.57.740	W087.35.400	CCYC east mark
SE	135 T, .75NM > CP	White	N41.57.210	W087.35.690	CCYC southeast mark
S	180 T, .75NM > CP	White	N41.56.990	W087.36.400	CCYC south mark
SW	225 T, .75NM > CP	White	N41.57.210	W087.37.110	CCYC southwest mark
W	270 T, .75NM > CP	White	N41.57.740	W087.37.400	CCYC west mark
NW	315 T, .75NM > CP	White	N41.58.270	W087.37.110	CCYC northwest mark
V	001 T, 3.0 NM > CP	White	N42.00.740	W087.36.400	CCYC distant north mark
T	045 T, 3.4 NM > CP	White	N42.00.120	W087.33.070	CCYC distant northeast mark
E2	090 T, 3.0 NM > CP	White	N41.57.740	W087.32.400	CCYC distant east mark
SE2	135 T, 4.0 NM > CP	White	N41.55.830	W087.31.630	CCYC distant southeast mark

#### 3. FINISHING

- 3.1. **Sail number boards must be displayed on the shore side of the boat at the finish.** The material used in the construction of the sail number board is optional.
- 3.2. No yacht finish report shall be required. Boats are to contact the race committee on channel 78 approximately one half mile before they finish. Upon finishing boats are required to contact the race committee and report their finish time according to GPS time and shall receive confirmation from the Race Committee that they have finished.

#### 4. DOCKAGE

- 4.1. Rafting privileges will be extended for entered yachts. There is no need to contact the harbor master. All are welcome to enter the harbor and tie up.

#### 5. SOCIAL ACTIVITIES

- 5.1. The Corinthian Race Weekend Party will be held after Saturday's racing. Entertainment begins about 7:00 p.m. Music by the Luke Pytel Band –The galley and bar will be open. **CASH ONLY!** Rosa's Lounge review of the band: <https://rosaslounge.com/event.cfm?id=188065>  
Dine & dance, celebrate the beginning of the racing season!



# CHICAGO CORINTHIAN YACHT CLUB

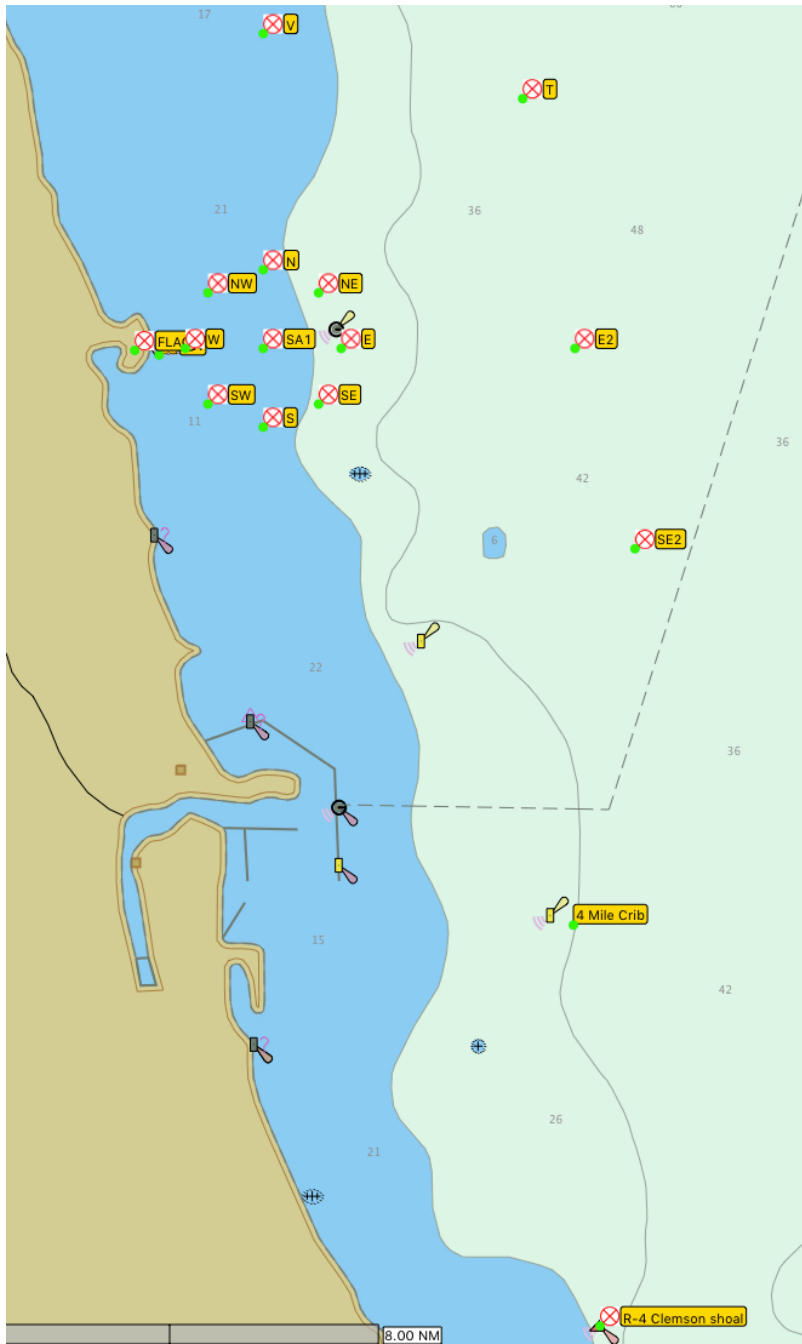


## SAILING INSTRUCTIONS - AMENDMENT #1

### -- Spring Opener Long Distance --

SEE FOLLOWING PAGES FOR COURSE DIAGRAMS.

- ALL MARKS DEPICTED





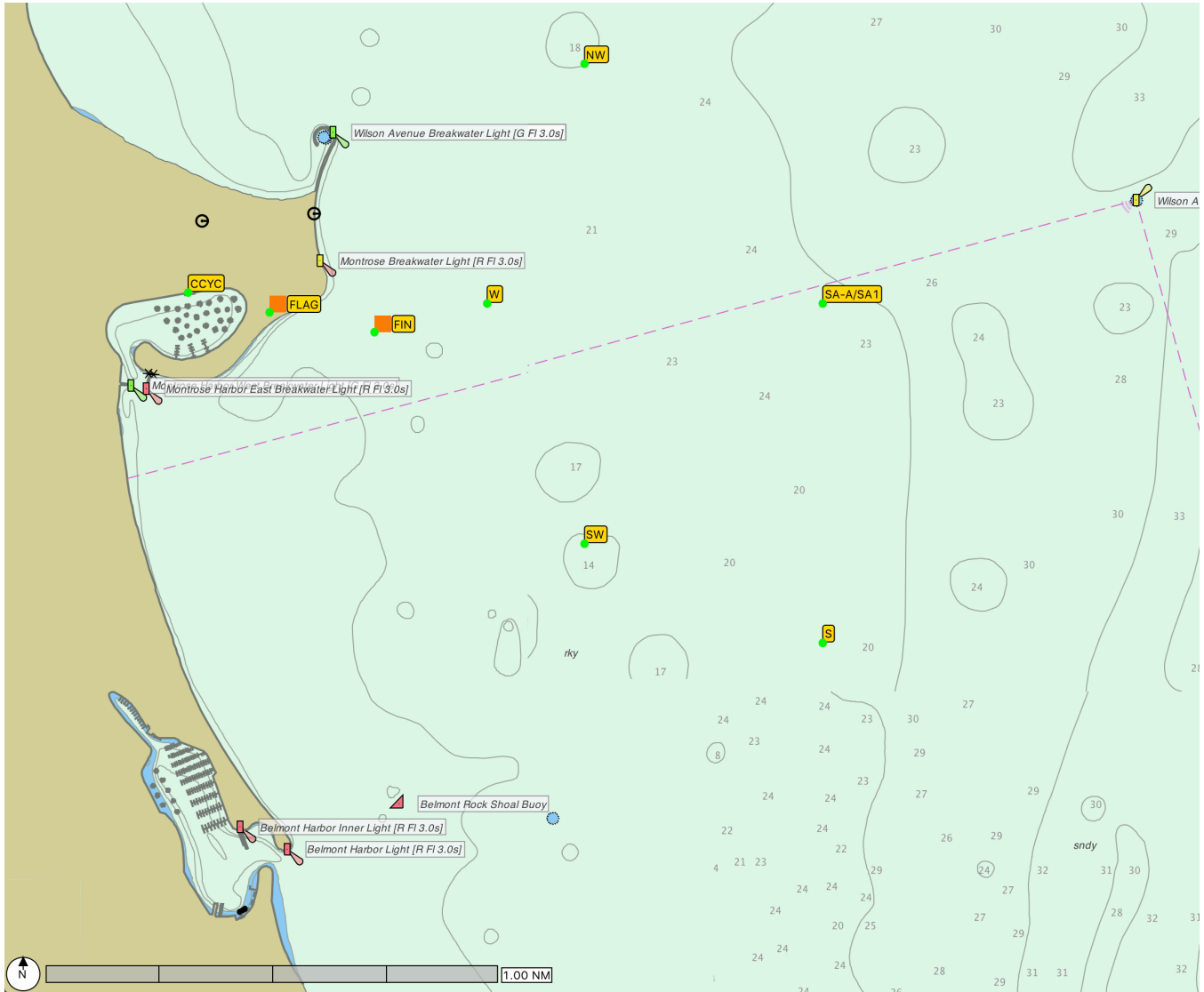
# CHICAGO CORINTHIAN YACHT CLUB



## SAILING INSTRUCTIONS - AMENDMENT #1

### -- Spring Opener Long Distance --

- START & FINISH MARK DETAILS





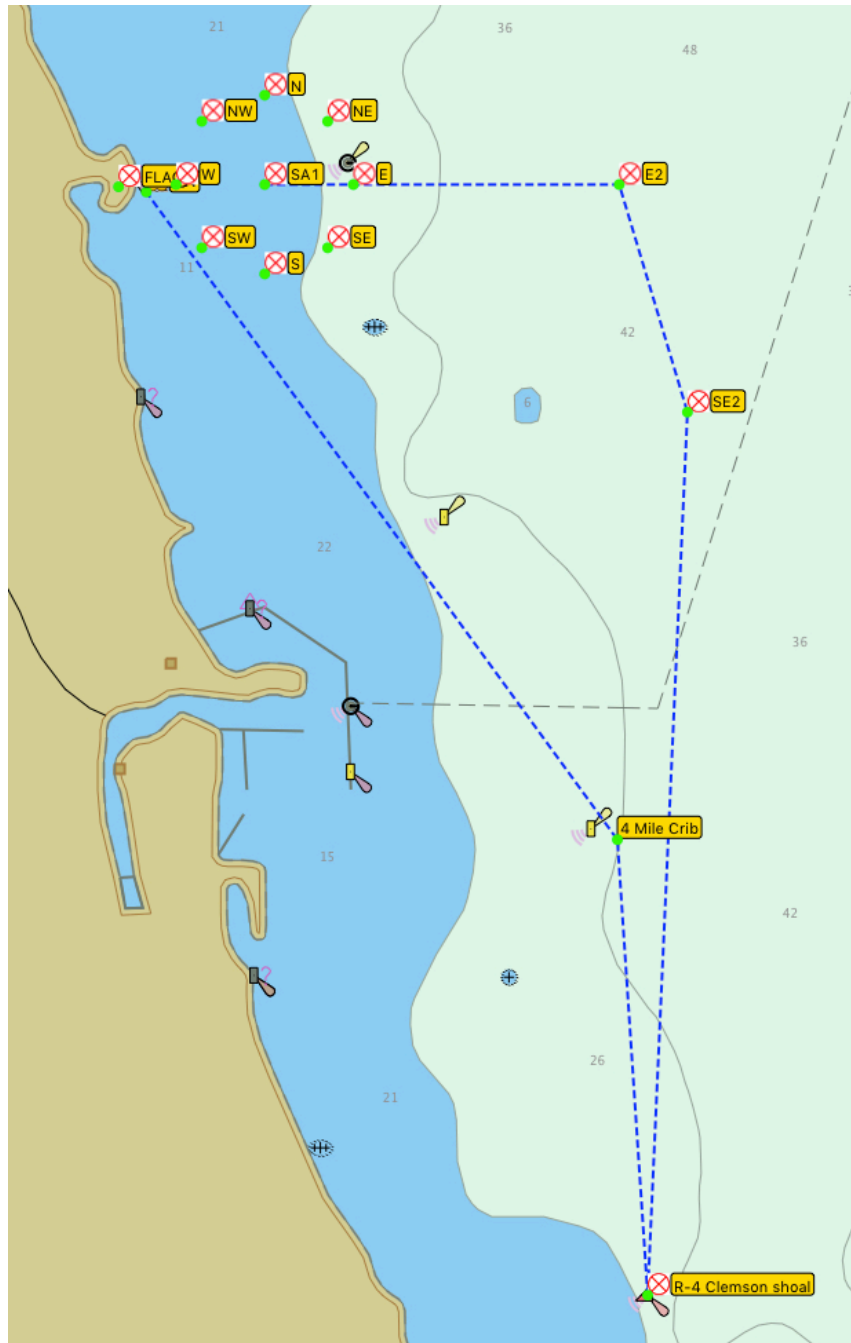
# CHICAGO CORINTHIAN YACHT CLUB



## SAILING INSTRUCTIONS - AMENDMENT #1

### -- Spring Opener Long Distance --

COURSE "E" (22.96NM)





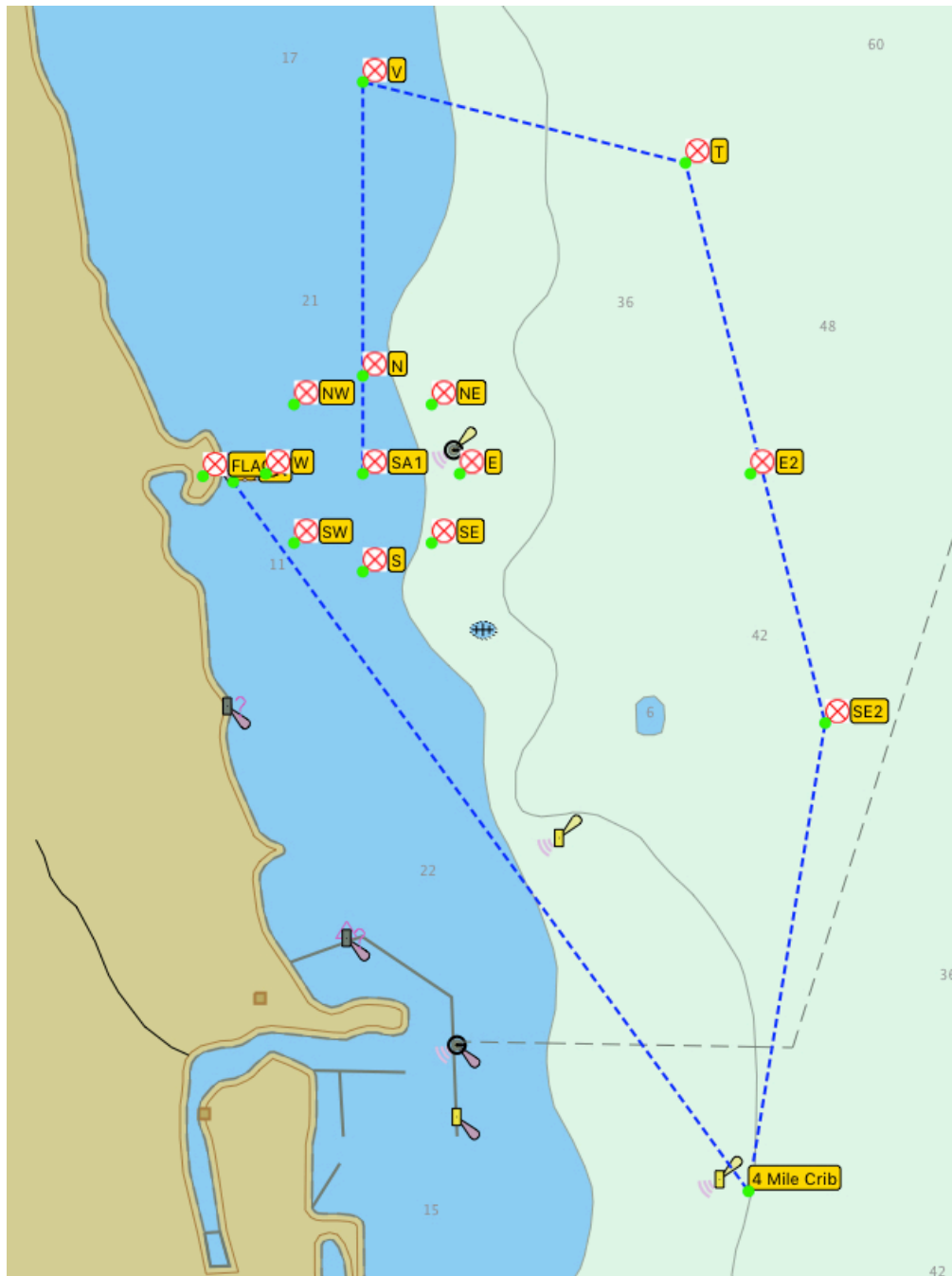
# CHICAGO CORINTHIAN YACHT CLUB



## SAILING INSTRUCTIONS - AMENDMENT #1

### -- Spring Opener Long Distance --

COURSE "N" (20.33NM)





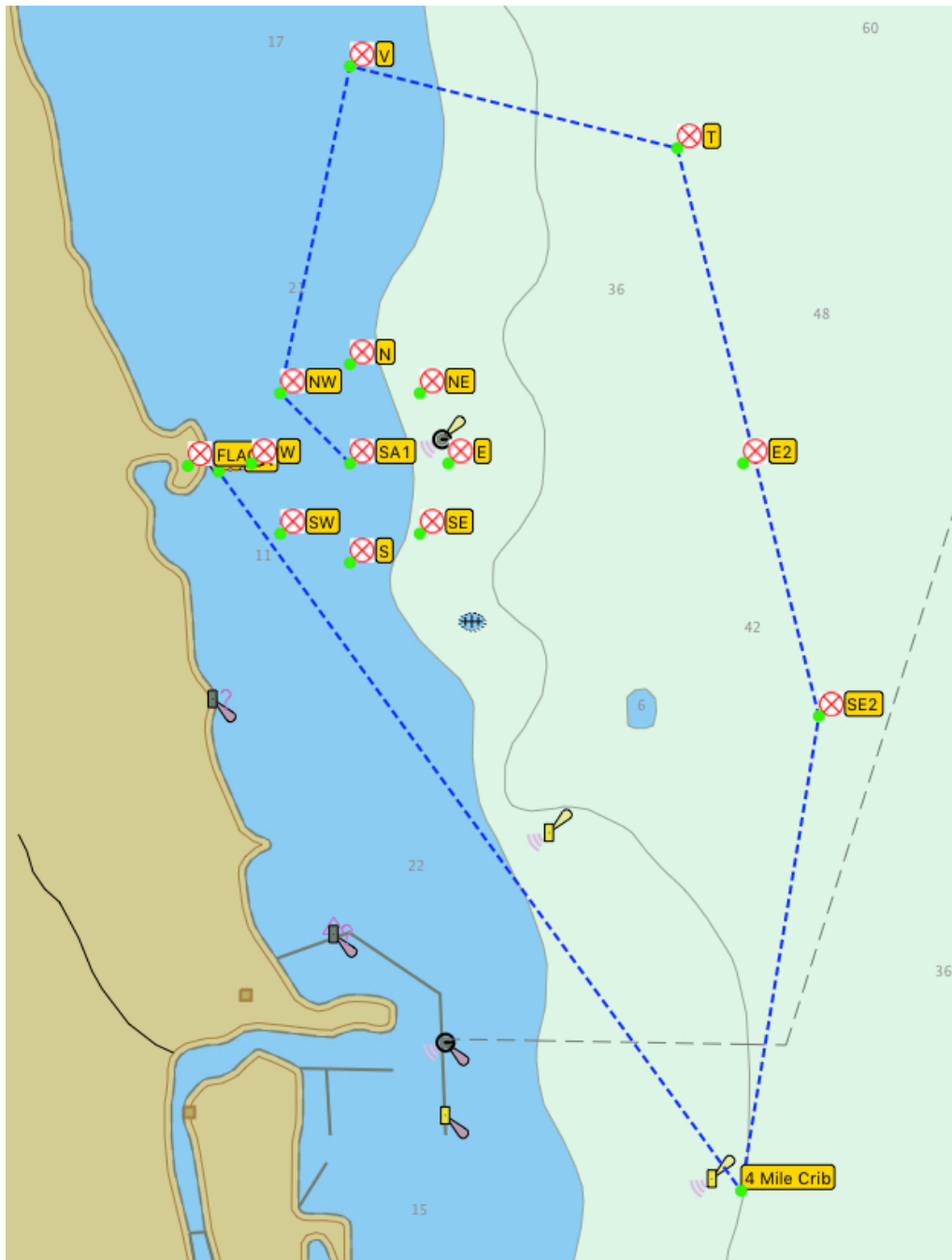
# CHICAGO CORINTHIAN YACHT CLUB



## SAILING INSTRUCTIONS - AMENDMENT #1

### -- Spring Opener Long Distance --

COURSE "NW" (20.61NM)





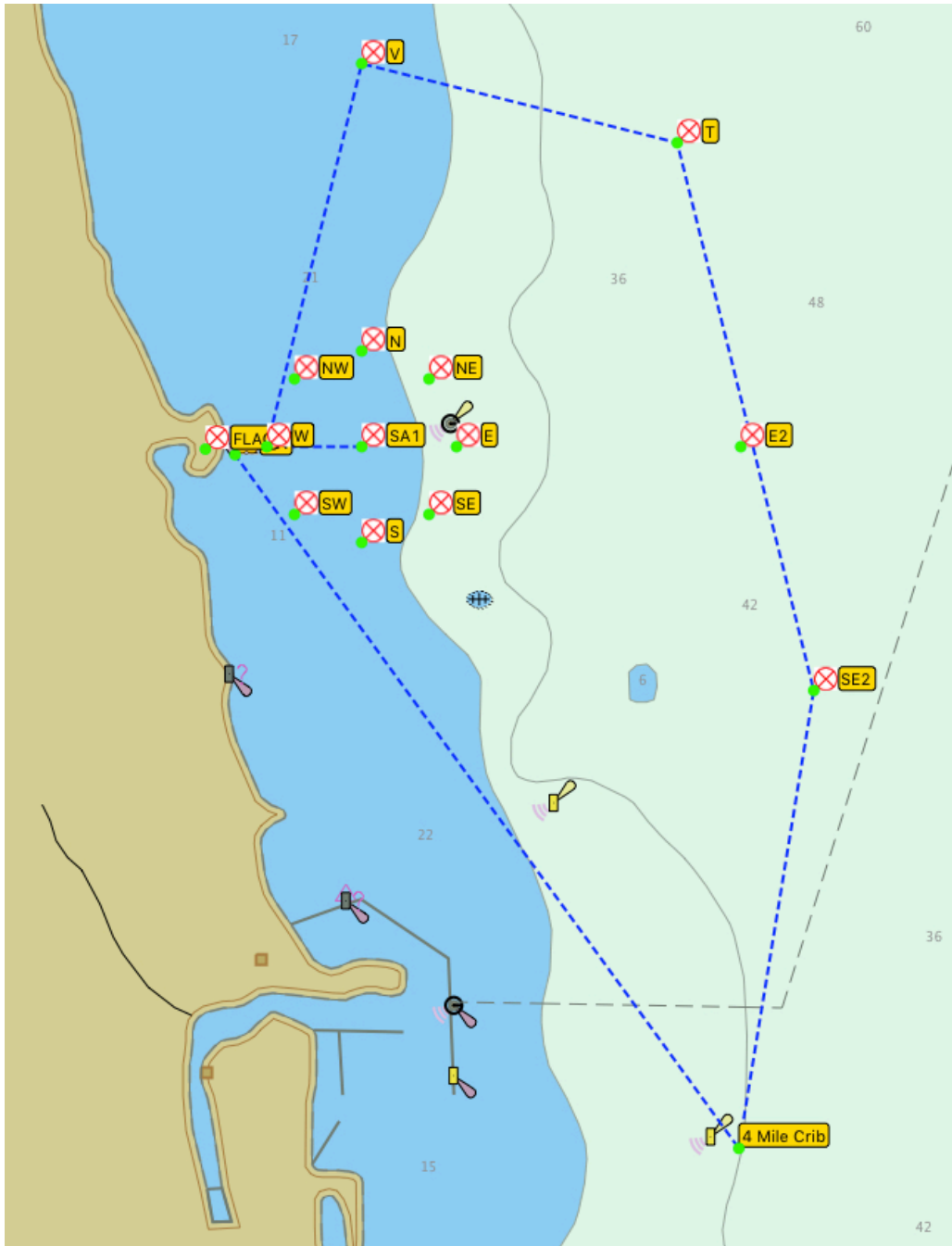
# CHICAGO CORINTHIAN YACHT CLUB



## SAILING INSTRUCTIONS - AMENDMENT #1

### -- Spring Opener Long Distance --

COURSE "W" (21.17NM)







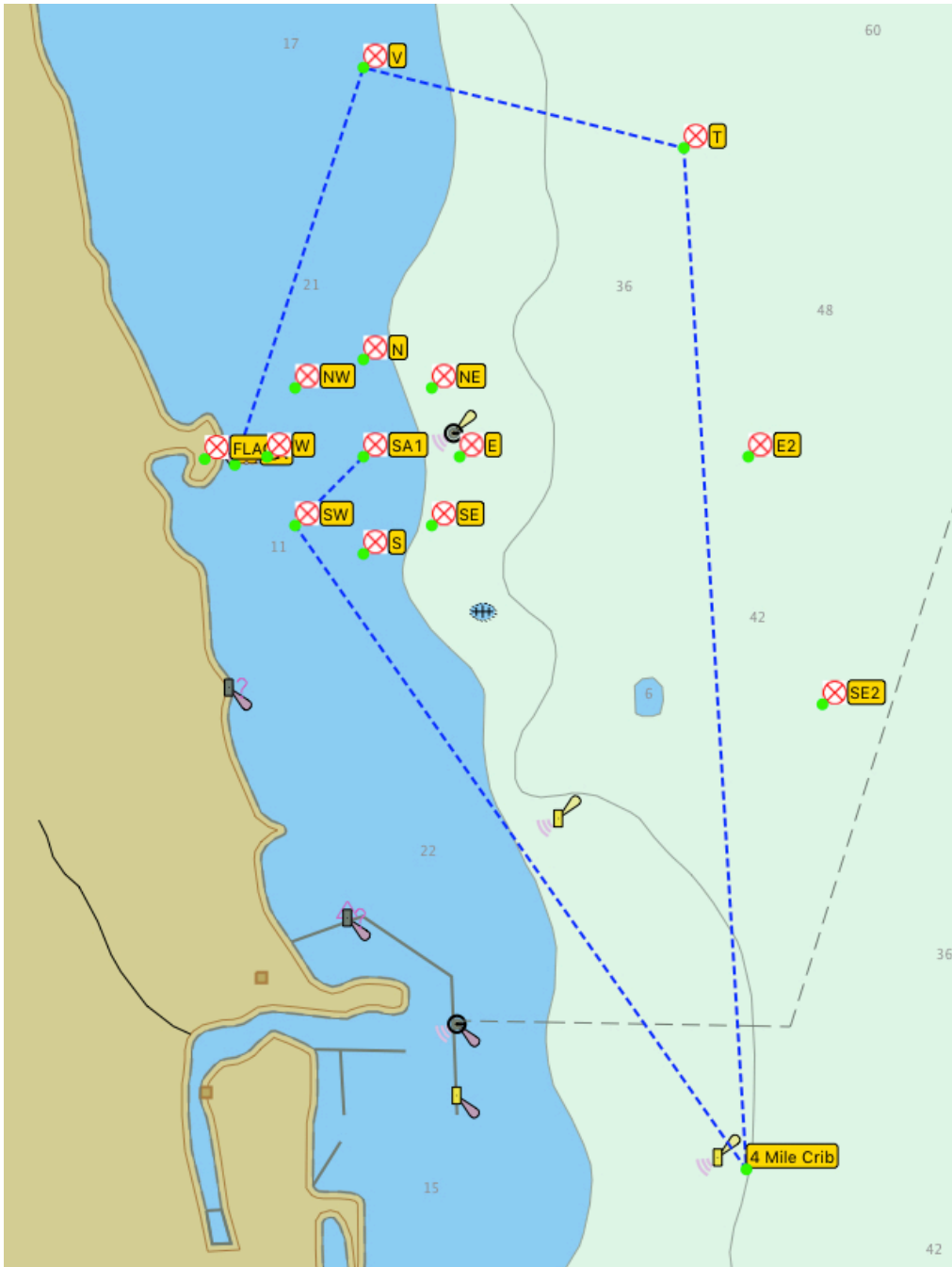
# CHICAGO CORINTHIAN YACHT CLUB



## SAILING INSTRUCTIONS - AMENDMENT #1

### -- Spring Opener Long Distance --

COURSE "SW" (20.49NM)





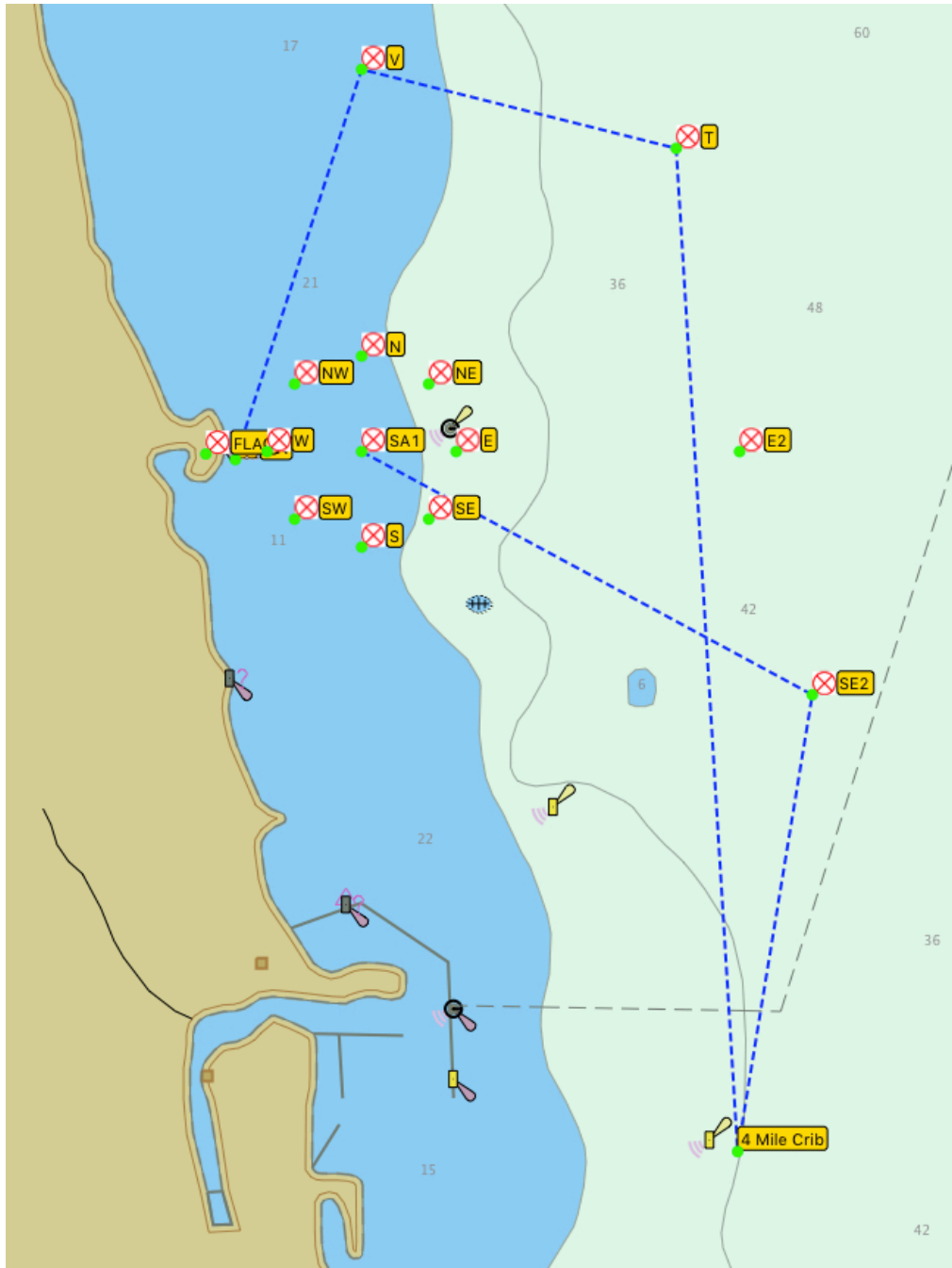
# CHICAGO CORINTHIAN YACHT CLUB



## SAILING INSTRUCTIONS - AMENDMENT #1

### -- Spring Opener Long Distance --

COURSE "SE" (21.33NM)





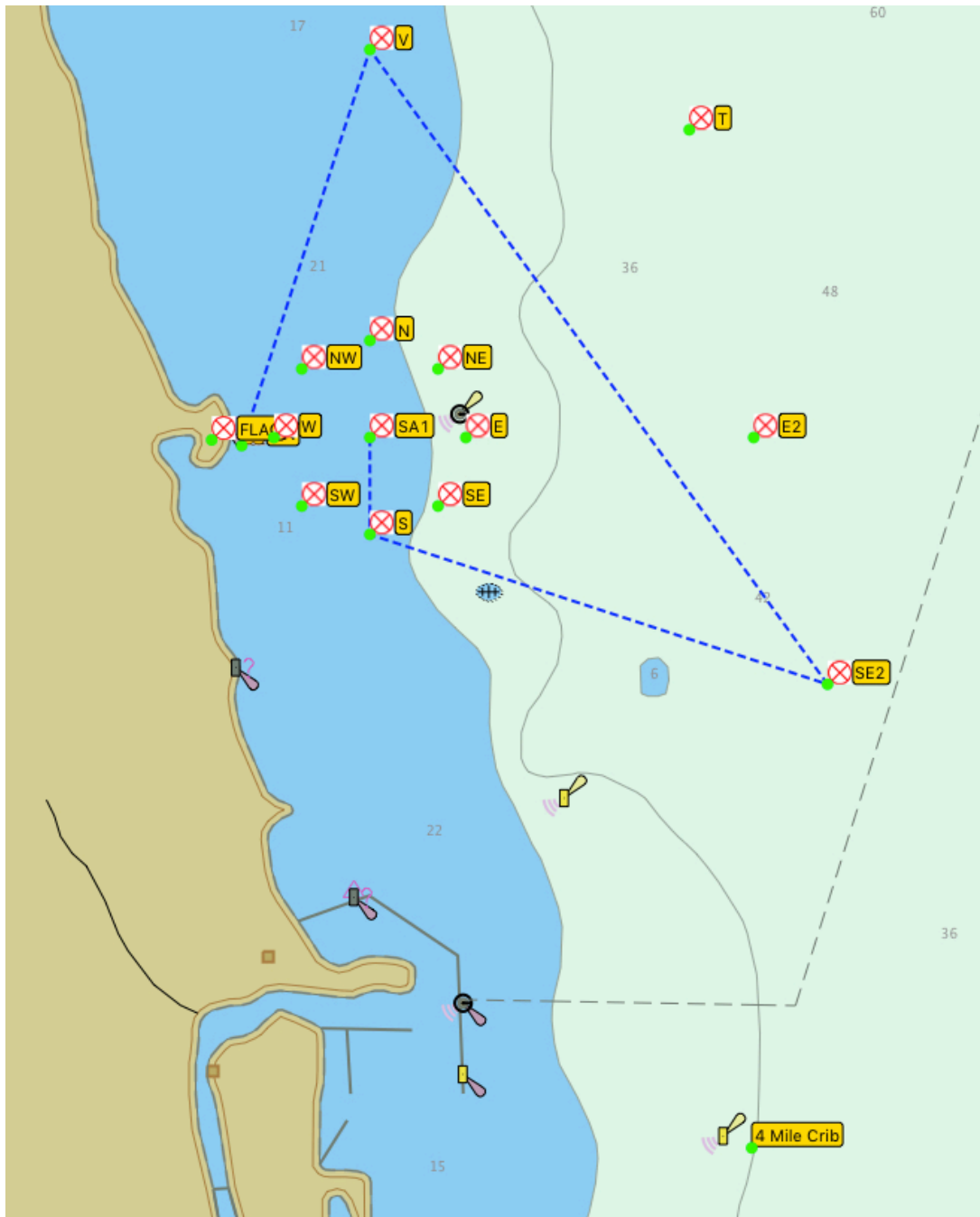
# CHICAGO CORINTHIAN YACHT CLUB



## SAILING INSTRUCTIONS - AMENDMENT #1

### -- Spring Opener Long Distance --

COURSE "S" (13.76NM)





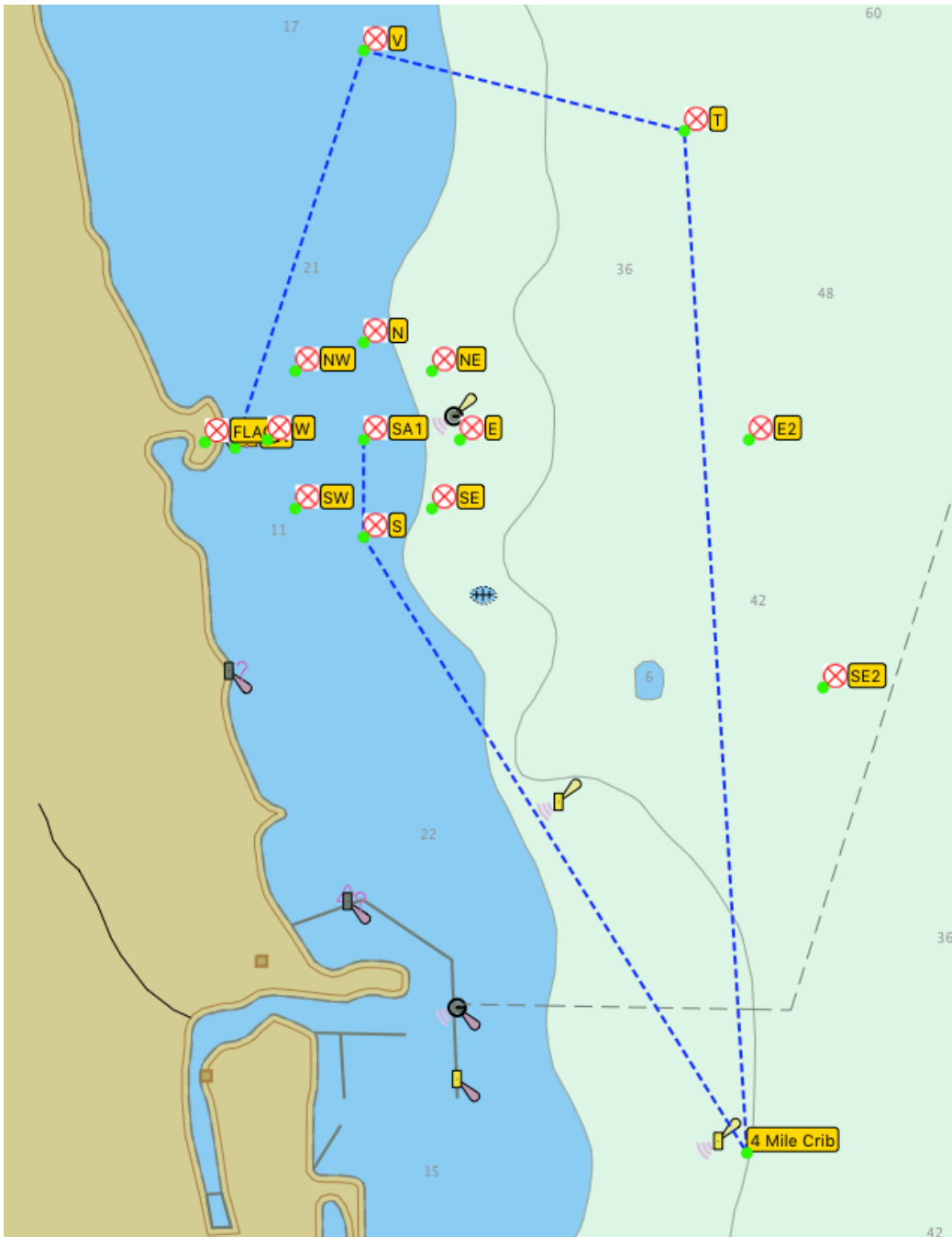
# CHICAGO CORINTHIAN YACHT CLUB



## SAILING INSTRUCTIONS - AMENDMENT #1

### -- Spring Opener Long Distance --

COURSE "S" (20.01NM)





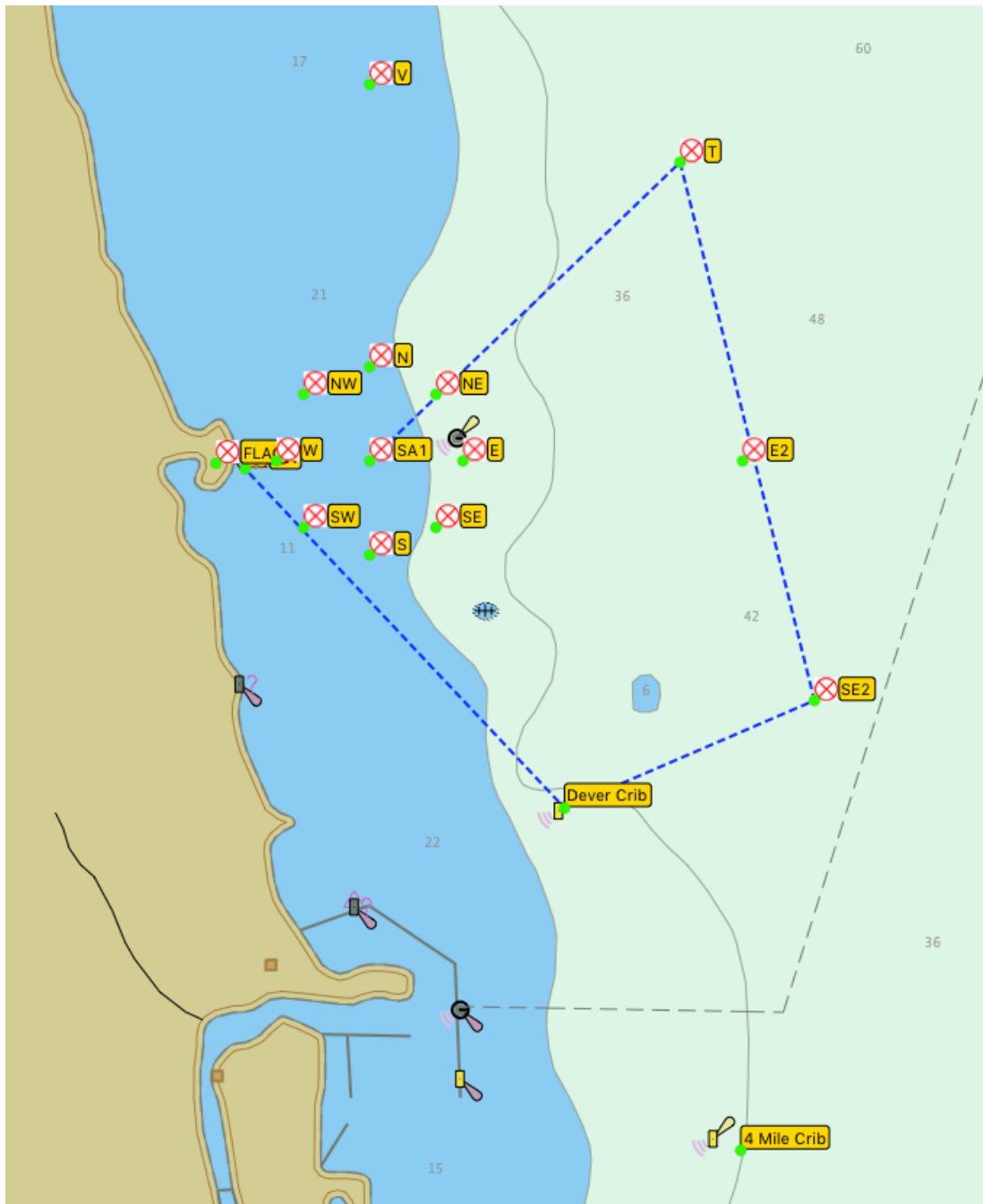
# CHICAGO CORINTHIAN YACHT CLUB



## SAILING INSTRUCTIONS - AMENDMENT #1

### -- Spring Opener Long Distance --

COURSE "NE-" (13.74NM)





# CHICAGO CORINTHIAN YACHT CLUB



## SAILING INSTRUCTIONS - AMENDMENT #1

### -- Spring Opener Long Distance --

COURSE "NE" (18.22NM)

